



## **OPERATOR'S MANUAL AND PARTS LIST PETROL BRUSHCUTTER - THBC26**

Sales & Helpline 01793 333212

[www.thehandy.co.uk](http://www.thehandy.co.uk)

**Before use please read & understand this manual, paying particular attention to the safety instructions.**

# CONTENTS

SAFETY INSTRUCTIONS	3
MAJOR PARTS	4
FUEL	5
SPECIFICATIONS	5
ASSEMBLY	6-7
OPERATION	8
REPLACEMENT OF LINE	9
HINTS AND TIPS	10
MAINTENANCE	11
PARTS DIAGRAMS AND LISTS	12-15
EC DECLARATION OF CONFORMITY	16

# SAFETY INSTRUCTIONS

**Read and understand the owner's manual and the labels affixed to the brushcutter. Learn its application and limitations as well as the specific potential hazards. Retain these instructions for reference.**

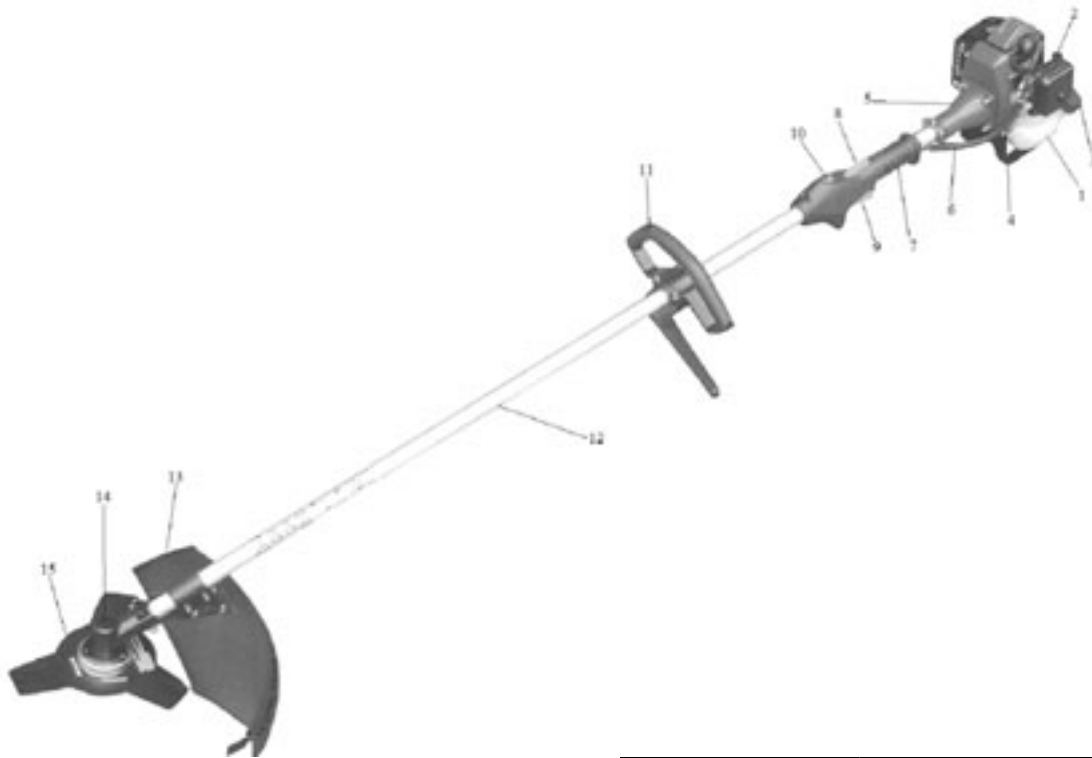


- Use sturdy footwear and a helmet with eye and ear protection. Protect exposed parts of your body. Wear heavy duty gloves, preferably made of leather.
- Do **not** operate the brushcutter if you are tired, ill or under the influence of alcohol or drugs.
- Do **not** smoke when using the brushcutter and ensure caution when handling fuel. We recommend that you fuel the machine at least 3m away from where you wish to work in case any spilt fuel ignites when starting the engine.
- Ensure that bystanders, children and pets keep well away when starting or cutting - at least 15m.
- Inspect the brushcutter, and in particular the cutting blade, before use for any worn or damaged parts. Do not use until the parts are repaired or replaced.
- Before starting the engine make sure the blade is not in contact with anything and have a clear work area and secure footing.
- Hold the brushcutter firmly with both hands when using and keep all parts of your body away from the machine. Always ensure a safe firm footing and do not over-reach or work above your waist.
- Always carry the brushcutter with the engine stopped.
- **Never** lay the hot brushcutter down on dry grass or any combustible material where there is a fire risk from the hot engine.
- Only use the brushcutter in good light and visibility. During cold weather be aware of slippery or wet areas.
- Limit the amount of time over which the brushcutter is to used continuously - about 30-40 minutes per session, taking 10-15 minutes break. Try to keep the total amount of work performed in a day to under 2 hours.
- Please recycle the cardboard packaging in which the brushcutter is delivered once you have checked that it is complete and working.



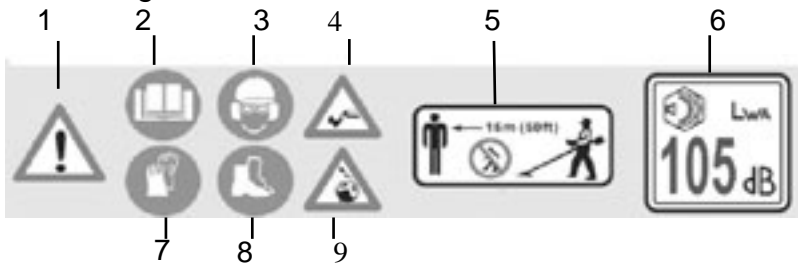
**Always shut off the engine before setting it down.**

# MAJOR PARTS



1	Fuel Tank
2	Starter
3	Air Cleaner
4	Fuel Tank Bracket
5	Housing
6	Throttle Cable
7	Lever Assembly
8	Safety Lever
9	Lever
10	Stop Switch
11	Handle Assembly
12	Bracket
13	Blade Guard
14	Gear Case
15	Blade

## Warning Labels on Machine



1	Warning! Attention
2	Read Owners Manual
3	Wear Head Protection
4	Keep Feet away from Cutter
5	Keep Bystanders away
6	Sound Power Level
7	Wear Strong Gloves
8	Wear Safety Boots
9	Keep Hands away from Cutter

# FUEL

**Petrol is very flammable. Avoid smoking or fuelling the brushcutter anywhere near a flame or sparks. Allow the engine to cool before re-fuelling. Fuel the engine at least 3m away from your work area.**

- Use a ratio of 25:1 unleaded petrol to 2-stroke mineral oil. For synthetic or semi-synthetic, use the oil manufacturer's ratio. Mix in the mixing bottle.
- Unscrew the fuel cap, and fuel the machine to 80% capacity. Fasten the fuel cap tightly and wipe up any spillage.
- Ensure that any stored petrol/oil mixture (2-stroke) is clearly marked in a separate can and only stored for 4-6 weeks. If the brushcutter is not going to be used for a long period, drain the mixture from the fuel tank, start the engine and drain the carburettor of any remaining fuel.
- Dispose of any unwanted 2-stroke mixture at an authorised recycling point.

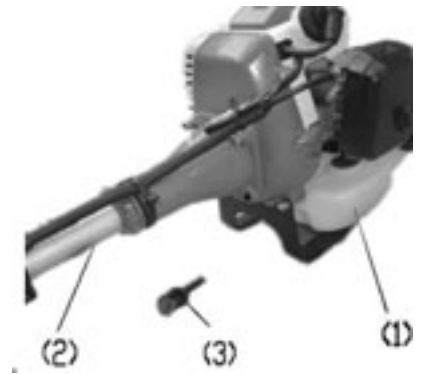


# SPECIFICATIONS

<b>Model</b>	<b>THBC26</b>
Blade	3T
Engine	Air Cooled 2-stroke
Displacement	25.4cm <sup>3</sup>
Starter	Recoil
Fuel	Unleaded Petrol and 2 Stroke Oil
Fuel Tank Capacity	0.6 litres
Weight	6 kg

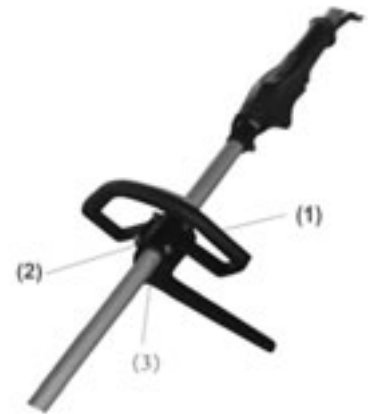
# ASSEMBLY

- Normally the brushcutter will arrive with the main shaft (2) and fuel tank (1) attached.
- If not, attach using the four bolts (3) supplied.



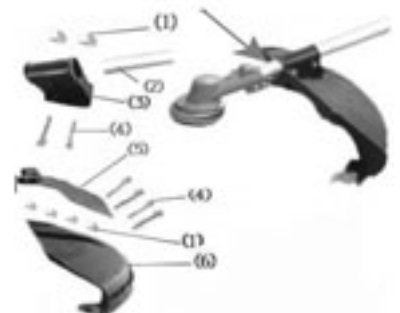
## Attach the Handle:

- Attach the D loop handle (1) over the rubber mount (3) on the shaft and tighten the bolts (2).



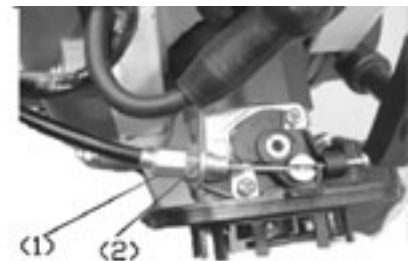
## Safety Guard:

- Attach the safety guard (6) as shown and fix securely using the four bolts M5x25 supplied.



## Adjusting the Throttle Cable:

- After releasing the throttle lever, pull the throttle wire.
- The normal play is 1 or 2 mm when measured at the carburettor side end.
- If the play is too short or long, take off the air cleaner cover, loosen the locknut (1) and adjust (2).

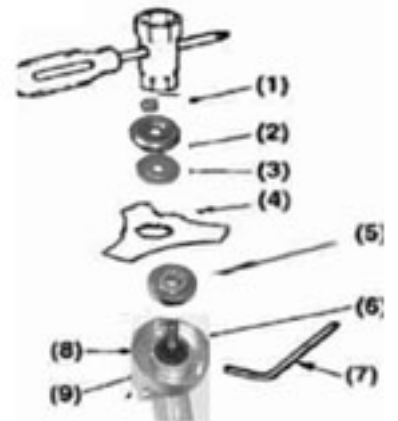


# ASSEMBLY, cont'd

## Attaching the Metal Blade:

- Lay the brushcutter on its back.
- Insert the allen key (7) into the gear shaft, line up the holes in the blade holder and cover to stop the shaft turning.
- Place the blade onto the upper blade holder (5) and centre.
- Place the washer (3) onto the assembly, then the lower blade holder (2) and finally the nut (1). Screw in an **anti-clockwise** direction and tighten using the spanner.
- Release the allen key.

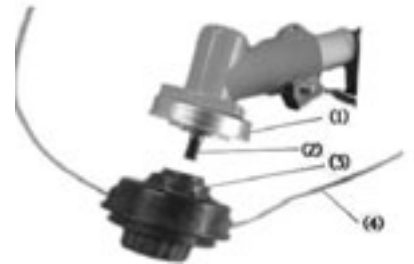
**Note: to undo the nut to change the blade, turn clockwise.**



## Attaching the Line Trimmer Head:

- Lay the brushcutter on its back.
- Insert the allen key into the gear shaft as before to stop the shaft turning.
- Remove washer (3 in pic above) but leave washer (5) on the shaft.
- Screw the nylon head (3) **anti-clockwise** onto the threaded shaft (2) and tighten manually.
- Release the allen key.

**Note: to remove the trimmer head, turn clockwise.**



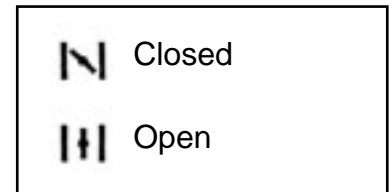
# OPERATION

Before starting the engine, inspect the entire unit for loose fittings or fuel leaks, and ensure that the cutting attachment is securely fastened.

- Place the machine on a flat surface away from the area in which you intend to work.
- Fuel the machine to 80% capacity.



- Put the ignition switch (1) to "I" (start position).
- Move the choke lever (2-3) to the closed position
- For a cold start press the primer button 5 times.
- Whilst holding the unit firmly, pull on the starter rope until the machine fires.
- Open the choke up gradually and pull the starter rope again until the machine starts.
- Allow the engine to run for 2 to 3 minutes to warm up.



If starting a warm engine there may be no need to prime the engine or put the choke lever to "closed".

## Stopping the Engine:

- Return the throttle to the idling position.
- Push the ignition switch to "O" (stop position).



## Attaching the Harness:

- Attach the clip on the harness to the loop on the control handle and adjust to suit the operator.



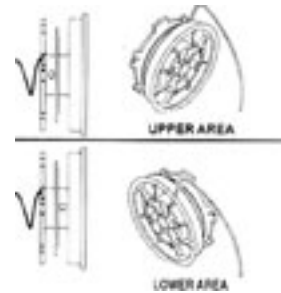
# REPLACEMENT OF LINE

Follow these steps to replace the cutting line.

- Stop the engine.
- Lay the trimmer on the floor so that the cutting head is facing up.
- Squeeze the head on both sides at right angles to the eyelets.
- Remove the empty spool being careful not to lose the spring behind the head.
- Clean the head thoroughly and inspect for any worn or damaged parts.

To reload the spool with line:

- Cut two lengths of spare line 3 metres long.
- Position each line in the two holes located in the centre of the spool and wind in the direction of the arrow on the spool.
- Wind the line on until you have about 15cm left.
- Secure the lines into the slots on the spool.
- Replace the spring and reposition the spool with the two cords in the eyelets.
- Close the spool making sure it snaps together.
- Release the lines from the spool by sharply pulling each line while pushing down on the spool.



# HINTS AND TIPS

## **Using the Metal Blade:**

Use the metal blade attachment for cutting thicker grass, weeds and undergrowth. Adjust the cutting speed to suit the material to be cut. Grass at medium speed and thick weeds and shrubs at high speed.

If you operate at low speed there is a greater chance of weeds and twigs getting caught around the blade.

Use the brushcutter like a scythe - sweep it to the right and left just above ground level when cutting grass and light brush.

## **Using the Line Trimmer Head:**

Use the nylon head for cutting grass around fence posts and trees where a metal blade could become damaged.

When the two nylon cords become too short, accelerate the engine and bump the nylon head on the ground. The two cords will automatically feed out and be cut off at the correct length by the blade on the guard.

# MAINTENANCE

To ensure a long service life and to avoid any damage to the brushcutter, perform the following maintenance at regular intervals.

## **Air Filter:**

Check and clean the Air Filter regularly to ensure optimum performance. Remove the air filter cover, take out the element and wash in lukewarm water. Allow to dry completely and then replace. Clean off any excessive dirt and dust.

## **Fuel Filter:**

Take the filter out of the fuelling port using a small wire hook. Disconnect the filter assembly from the fuel pipe and unhook the retainer to disassemble it. Clean the components with petrol.

## **Spark Plug:**

Check the spark plug periodically and ensure that the gap between the electrodes is between 0.6 and 0.7mm. Adjust where necessary using the universal wrench supplied. If the spark plug is clogged with carbon, clean thoroughly or replace.

## **Grease:**

Apply multipurpose grease to the gear head after every 25 hours of use.

## **Idle Adjustment Screw:**

If the blade continues to run on when you release the throttle lever or the engine stops, it may be necessary to adjust the Idle Adjustment Screw. Turning it clockwise increases the engine speed and turning it anti-clockwise decreases the speed.

## **Storage:**

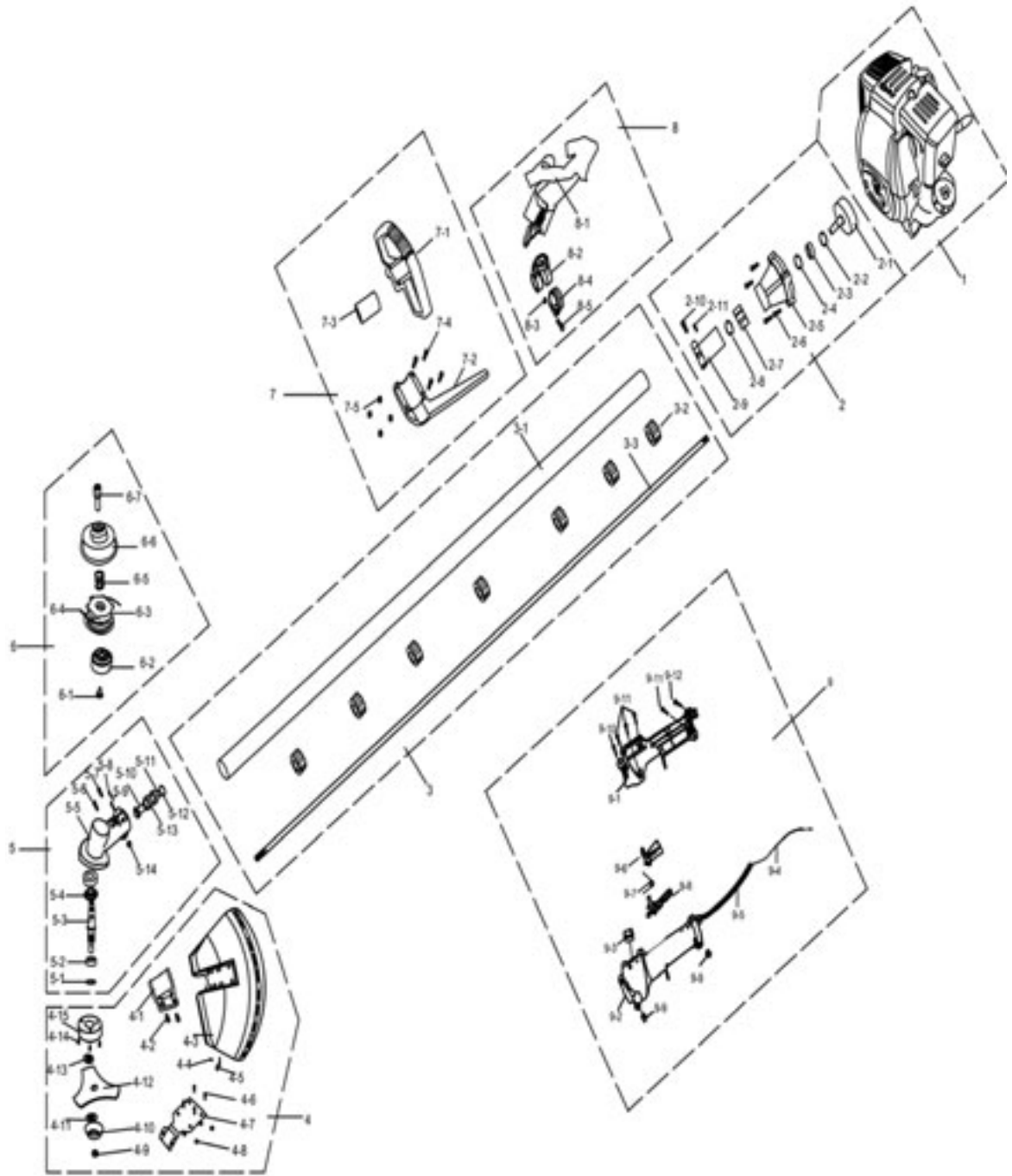
When storing the brushcutter for any length of time it is important to drain down the fuel, both in the tank and the carburettor. Either drain the fuel manually or run the engine until it uses up all the fuel.

Remove the spark plug and add a few drops of oil into the spark plug hole.

Pull the starter cord gently to confirm that a film of oil covers the engine inside.

Tighten the spark plug. Clean dirt or dust from the cutter blade and the outside of the machine and wipe with an oily cloth. Store in a dry place.

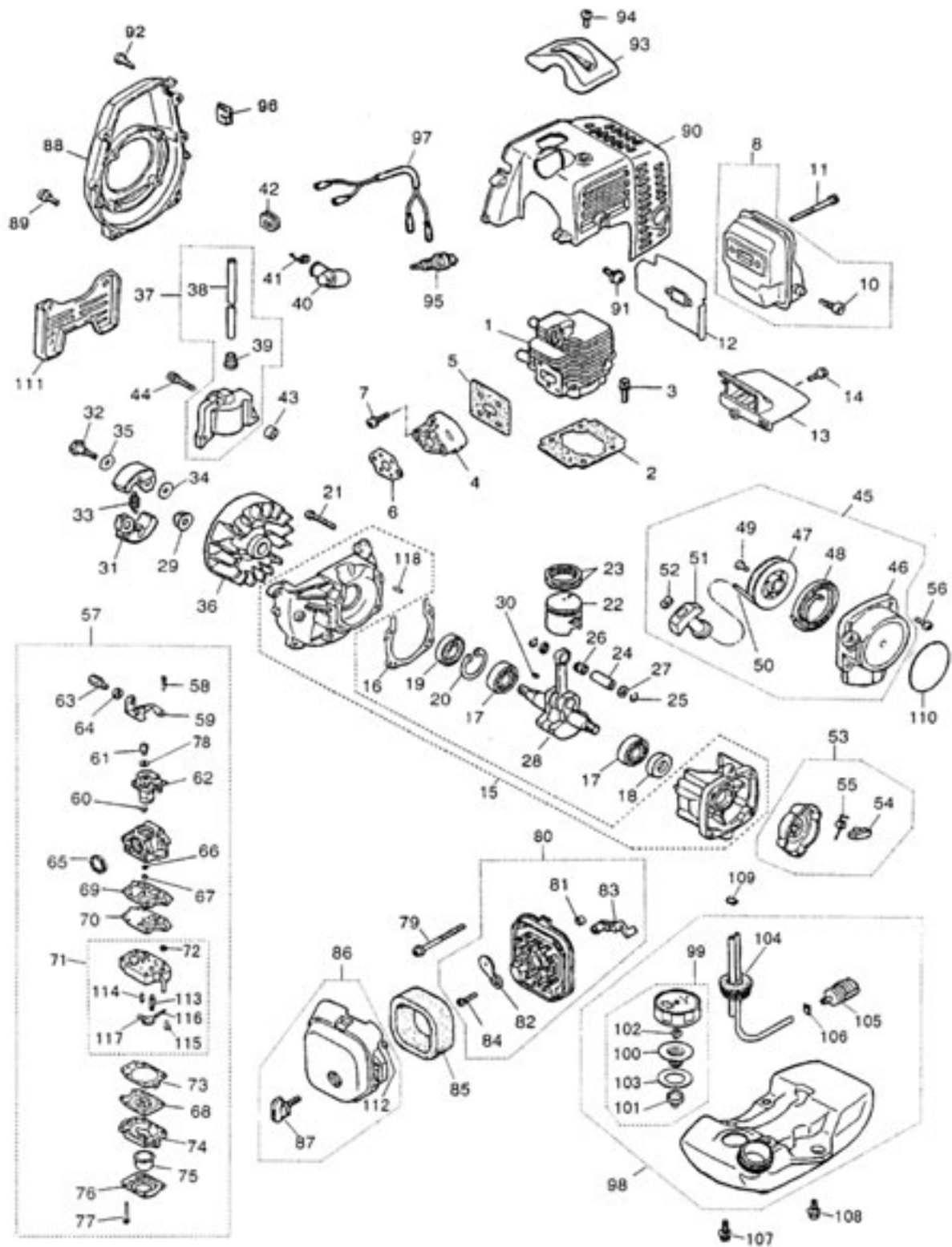
# PARTS DIAGRAM- DRIVE UNIT



## PARTS LIST - DRIVE UNIT

No	Part No	Description	Qty
1	TH125-1	Engine (see separate list)	1
2	TH125-2	Clutch Assembly	1
3	TH125-3	Drive Shaft Complete	1
3-1	TH125-3-1	Drive Shaft Cover	1
3-2	TH125-3-2	Bush	8
3-3	TH125-3-3	Shaft	1
4-1	TH125-4-1	Bracket	1
4-2	TH125-4-2	Bolt M5x25	2
4-3	TH125-4-3	Guard	1
4-4	TH125-4-4	Screw	1
4-5	TH125-4-5	Blade	1
4-6	TH125-4-6	Bolt M5x25	4
4-7	TH125-4-7	Plate	1
4-8	TH125-4-8	Nut M5	4
4-9	TH125-4-9	Nut M10	1
4-10	TH125-4-10	Cover	1
4-11	TH125-4-11	Holder B	1
4-12	TH125-4-12	Blade	1
4-13	TH125-4-13	Holder A	1
4-14	TH125-4-14	Cover	1
5	TH125-5	Gearcase Assembly	1
6	TH125-6	Line Head Assembly	1
7	TH125-7	Handle Assembly	1
9	TH125-9	Throttle Handle Assembly	1

# PARTS DIAGRAM- ENGINE



# PARTS LIST - ENGINE

No	Part No	Description	Qty	No	Part No	Description	Qty
1	TH126-1	Cylinder	1	40	TH126-40	Cap, plug	1
2	TH126-2	Gasket, Base	1	41	TH126-41	Spring	1
3	TH126-3	Bolt	2	42	TH126-42	Grommet	1
4	TH126-4	Insulator	1	43	TH126-43	Spacer	2
5	TH126-5	Gasket, Insulator	1	44	TH126-44	Bolt	2
6	TH126-6	Gasket, Carburettor	1	45	TH126-45	Recoil Assy	1
7	TH126-7	Screw	2	53	TH126-53	Pulley Assy	1
8	TH126-8	Muffler Assy	1	56	TH126-56	Screw	4
10	TH126-10	Arrestor	1	57	TH126-57	Carburettor Assy	1
11	TH126-11	Bolt	2	79	TH126-79	Screw	2
12	TH126-12	Gasket, Muffler	1	80	TH126-80	Body Assembly	1
13	TH126-13	Plate, Muffler	1	81	TH126-81	Sleeve	2
14	TH126-14	Screw	1	82	TH126-82	Plate, Choke	1
15	TH126-15	Crankcase, comp	1	83	TH126-83	Lever, Choke	1
16	TH126-16	Gasket, Case	1	84	TH126-84	Screw	1
17	TH126-17	Bearing	2	85	TH126-85	Element	1
18	TH126-18	Oil Seal	1	86	TH126-86	Cover Assembly	1
19	TH126-19	Oil Seal	1	88	TH126-88	Cover, Fan	1
20	TH126-20	Snap Ring	1	89	TH126-89	Screw	4
21	TH126-21	Screw	4	90	TH126-90	Cover, Engine	1
22	TH126-22	Piston	1	91	TH126-91	Screw	1
23	TH126-23	Ring	2	92	TH126-92	Screw	2
24	TH126-24	Pin	1	93	TH126-93	Guard, Plug	1
25	TH126-25	Snap Ring	2	94	TH126-94	Screw	1
26	TH126-26	Bearing	1	95	TH126-95	Spark Plug	1
27	TH126-27	Washer	2	96	TH126-96	Grommet	1
28	TH126-28	Crankshaft comp	1	97	TH126-97	Cord complete	1
29	TH126-29	Nut	1	98	TH126-98	Tank Assy	1
30	TH126-30	Key	1	99	TH126-99	Cap Assy	1
31	TH126-31	Shoe, Clutch	2	104	TH126-104	Pipe comp	1
32	TH126-32	Screw	2	105	TH126-105	Filter Assy	1
33	TH126-33	Spring	1	106	TH126-106	Clip	1
34	TH126-34	Washer	2	107	TH126-107	Screw	2
35	TH126-35	Washer	2	108	TH126-108	Screw	1
36	TH126-36	Rotor	1	109	TH126-109	Clip	1
37	TH126-37	Coil Assy	1	110	TH126-110	Label	1
				118	TH126-118	Pin	3

# EC DECLARATION OF CONFORMITY

Declaration of Conformity

Pursuant to the regulations of the following EC Directives:

- Electromagnetic Compatibility Directive 2004/108/EC
- Machinery Directive 2006/42/EC
- Noise Directive 2000/14/EC

**Handy Distribution Ltd** hereby declares that the product:

**Machine Type:** 25.4cc Brushcutter

**Machine Model:** THBC26

**Mass in kg:** 6.0kg

**Max Engine Speed:** 8000/min

**Cutting Capacity:** Brushcutter - 255mm; Line Trimmer 420mm

**Rated Power:** 0.75Kw

Conforms to the main safety requirements of the EC Directives listed above.

This conformity is based on the following standards and normative documents:

EN ISO 11806:2008

EN 55012:2007

Guaranteed Sound Power Level: 105 dB(A)

The responsible person, based in the EC, is identified below:

**Name:** Mr Simon Belcher

**Title:** Managing Director

**Company:** Handy Distribution Ltd

**Address:** Holey Drive, Stratton St Margaret, Swindon, Wiltshire SN3 4NS

Signature;



Date: 15th October, 2009



To order spare parts and see the complete range of garden machinery and garden equipment from Handy, visit:

**[www.thehandy.co.uk](http://www.thehandy.co.uk)**

Spares & Support: 01793 333212

